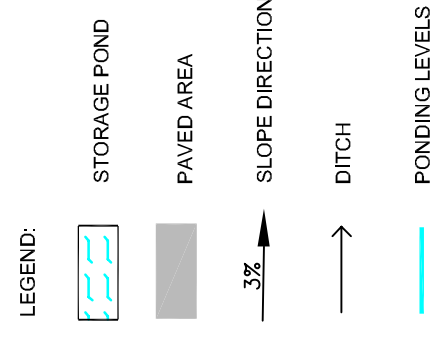
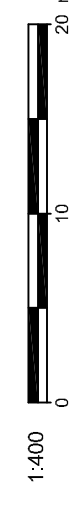
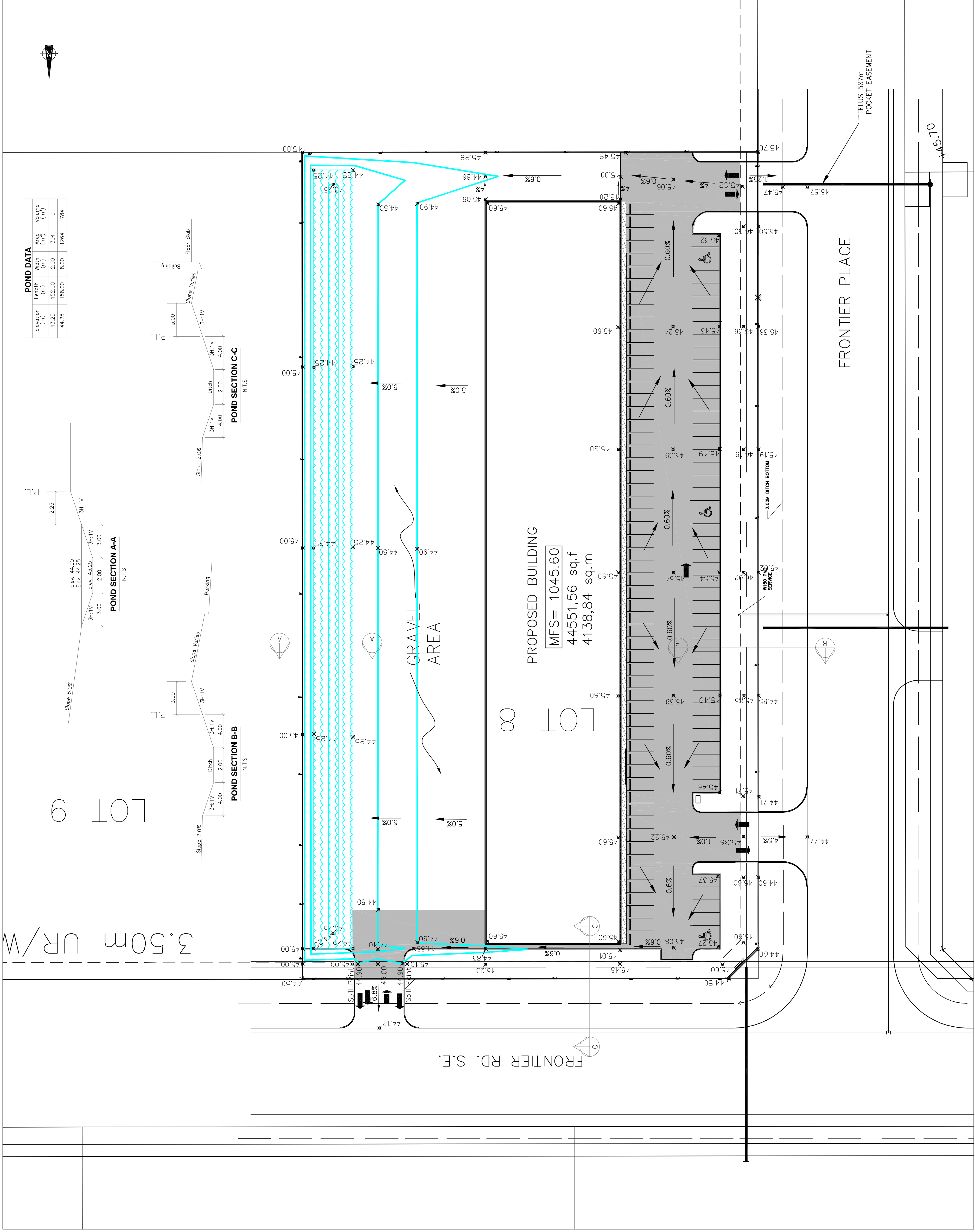
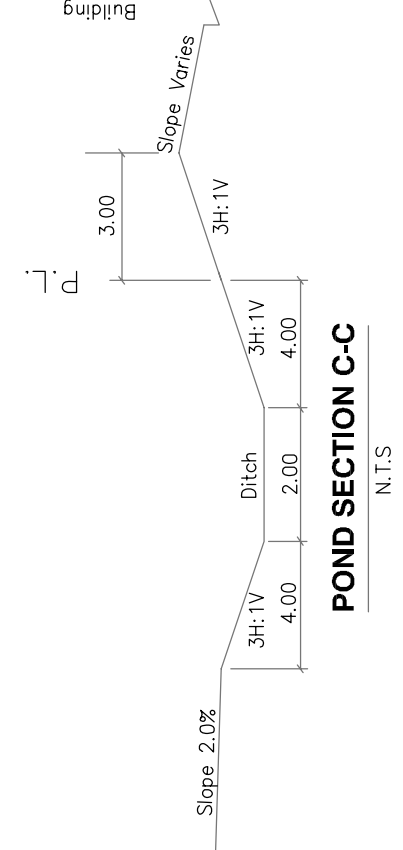
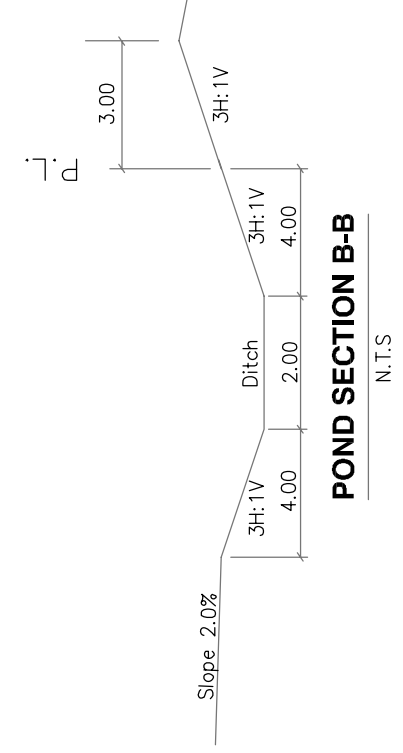
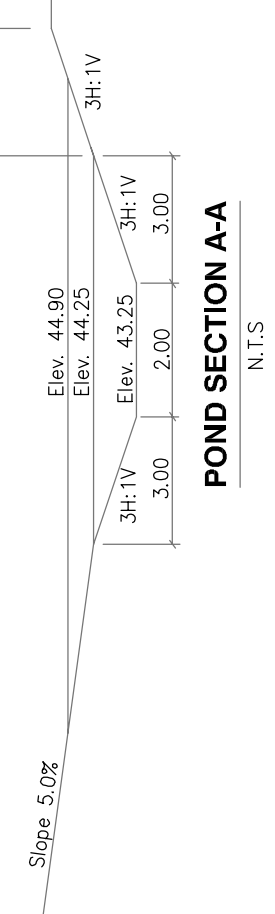


NOTE:
EAST PROPERTY LINE ELEVATIONS AS AGREED BY REMINGTON DEVELOPMENT CORPORATION AND URBAN SYSTEMS LTD.



POND DATA				
Elevation	Length	Width	Area	Volume
(m)	(m)	(m)	(m ²)	(m ³)
44.25	152.00	2.00	304	0
44.25	152.00	8.00	1284	784



REV	DD	MM	YY	REVISION DESCRIPTION	DRN	DES	CHK	APPR
09-09-09				ISSUE FOR APPROVAL	LGN	LGN	LCN	
11-08-09				ISSUED FOR REVIEW	LZ	LGN	DRW	
28-07-09				ISSUED FOR APPROVAL	LZ	DRW	DRW	
21-07-09				ISSUED FOR REVIEW	LZ	DRW	DRW	

ENGINEER'S SEAL:

PERMIT TO PRACTICE
WESTHOFF ENGINEERING RESOURCES INC.
Signature: _____
Date: _____
PERMIT NUMBER: P 6305
The Association of Professional Engineers,
Geologists and Geophysicists of Alberta

© The copyright in this drawing remains with the copyright owner, Westhoff Engineering Resources, Inc. Reproduction or use for any purpose other than that authorized by Westhoff Engineering Resources, Inc. is forbidden. This drawing is the property of Westhoff Engineering Resources, Inc. and shall remain confidential. It is to be used only for the project and site for which it was prepared. The contractor shall check and verify all dimensions and report any errors or omissions to the engineer.

CLIENT:
Acre Properties Ltd.

CONSULTANT:
Westhoff Engineering Resources, Inc.
Land & Water Resources Management Consultants
Suite 601, 10407 - 76 Avenue S.W., Calgary, Alberta, Canada, T2P 3P9
Phone: (403) 243-6700, Fax: (403) 243-6701, Email: westhoff@westhoff.ca

PROJECT:
FRONTIER INDUSTRIAL PARK PHASE I

TITLE:
LOT 8 GRADING PLAN

DESIGNED:	CHECKED:	PROJECT NO.:	DATE:	DRAWING NO.:
L. NARVAEZ	L. NARVAEZ	WER109-26	09-09-2009	GP01
DRAWN:	APPROVED:	SCALE:	CAD FILE:	SHEET NO.:
L. NARVAEZ	L. NARVAEZ	AS SHOWN	ACAD-10926L07	-