

GENERAL NOTE:

- PILE DEPTHS (BY OTHERS) SHALL BE SUBMITTED TO ENGINEER ALONG WITH SOIL REPORT FOR REVIEW PRIOR TO CONSTRUCTION
- CONCRETE SHALL BE MANUFACTURED USING SULPHATE RESISTANT TYPE 50 CEMENT WITH A WATER/CEMENTING RATIO OF 0.50 AND A MINIMUM 28 DAYS COMPRESSIVE STRENGTH OF 30 MPa
- ALL ORGANIC MATERIALS AND SOFT AREAS SHALL BE REMOVED FROM UNDER FOOTINGS AND REPLACED WITH CLAY OR GRAVEL MATERIAL. THE SUBGRADE SHALL BE COMPACTED TO A MINIMUM OF 98% S.P.M.D.
- GRAVEL BASE SHALL BE COMPACTED TO A MINIMUM OF 98% S.P.M.D.
- SAWCUT SIDEWALKS AND APRONS EVERY 5 FEET
- EXCAVATED FOOTING AREAS AND FORMWORK SHALL BE INSPECTED BY THE ENGINEER PRIOR TO POURING CONCRETE
- LOCATE FOOTINGS ON EXISTING CLAY TILL OR ENGINEERED BACKFILL AND RECOMPACT AFTER EXCAVATION TO 98% S.P.M.D.
- REINFORCING SHALL BE INSPECTED BY THE STRUCTURAL ENGINEER PRIOR TO POURING CONCRETE
- PILE REINFORCEMENT SHALL NOT INTERFERE WITH THE ANCHOR BOLTS

GENERAL NOTES:

THE DRAWING AND THE DESIGN OF THE WORK ARE THE PROPERTY OF D.F.K. ENGINEERING CANADA LTD. AND SHALL NOT BE REPRODUCED OR USED FOR ANY PURPOSE WITHOUT WRITTEN CONSENT BY THE OWNER.

NOTE:

NO.	DATE	DESCRIPTION



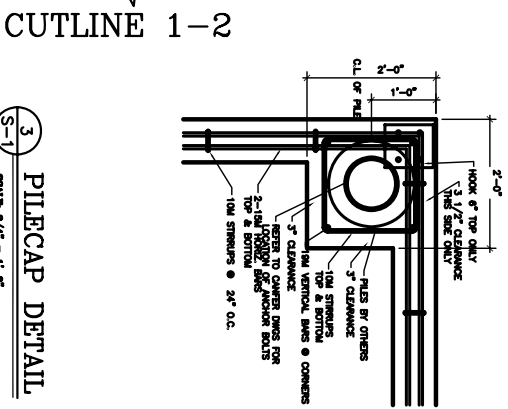
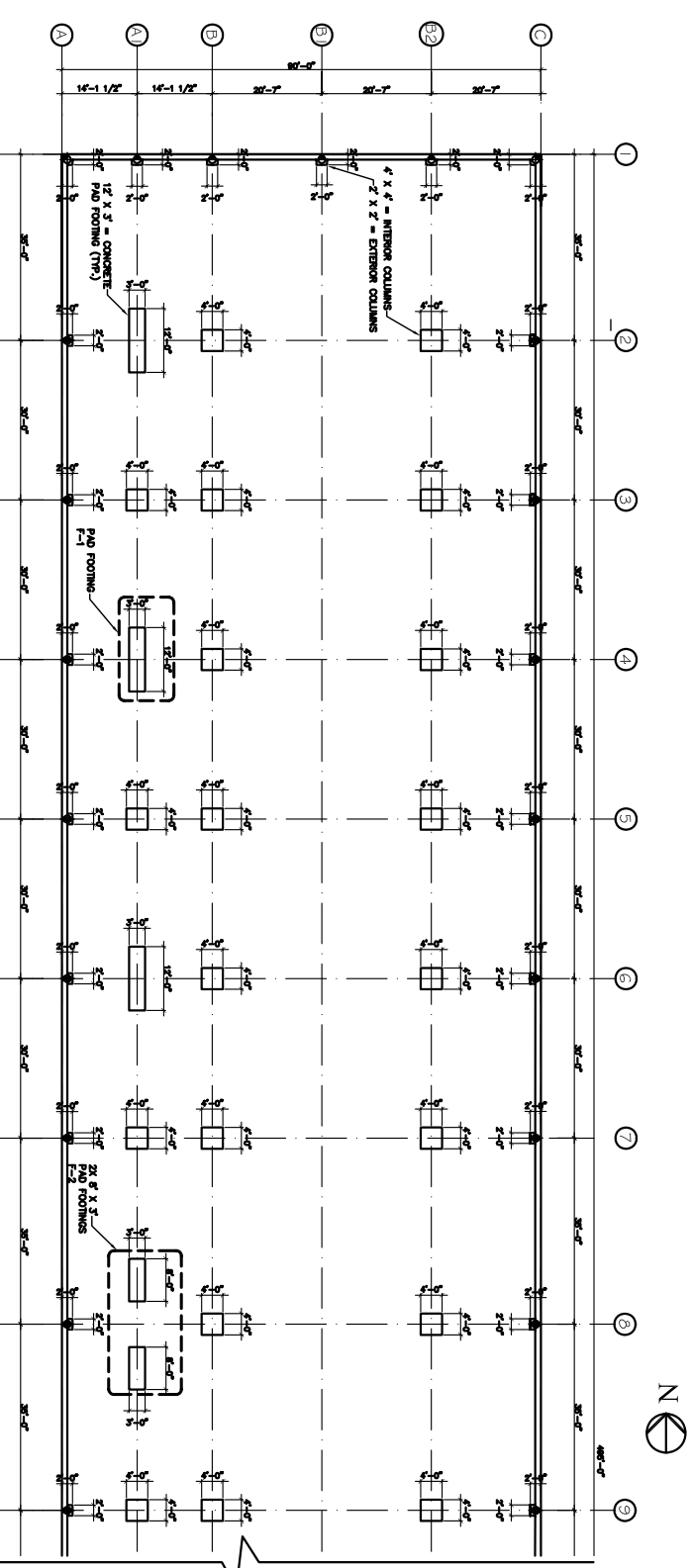
D.F.K. ENGINEERING
CANADA LTD.
CONSULTING ENGINEERS
PH: 403.236.1095 FAX: 403.279.2698
526. dlkeng@shaw.ca
21205 - 8800 VENTURA AVE S.E.
CALGARY, ALBERTA, T2S 0A2

PROJECT TITLE:
OFFICE WAREHOUSE
CONDOMINIUM
240040 FRONTIER PLACE SE
ROCKY VIEW ALBERTA.

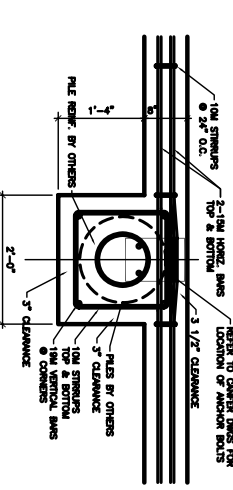
SHEET TITLE:
FOUNDATION PLAN

DRAWN: R. BARKER	CHECKED: D. BERTON	APPROVED: G. P. P. S.
SCALE: AS NOTED	PROJECT NO.: 29-2411	
DATE: JULY 1, 2009	DATE PRINTED: AUG 20, 2009	REVISIONS:

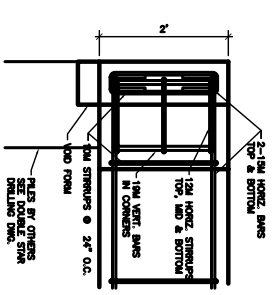
S-1
OF 1



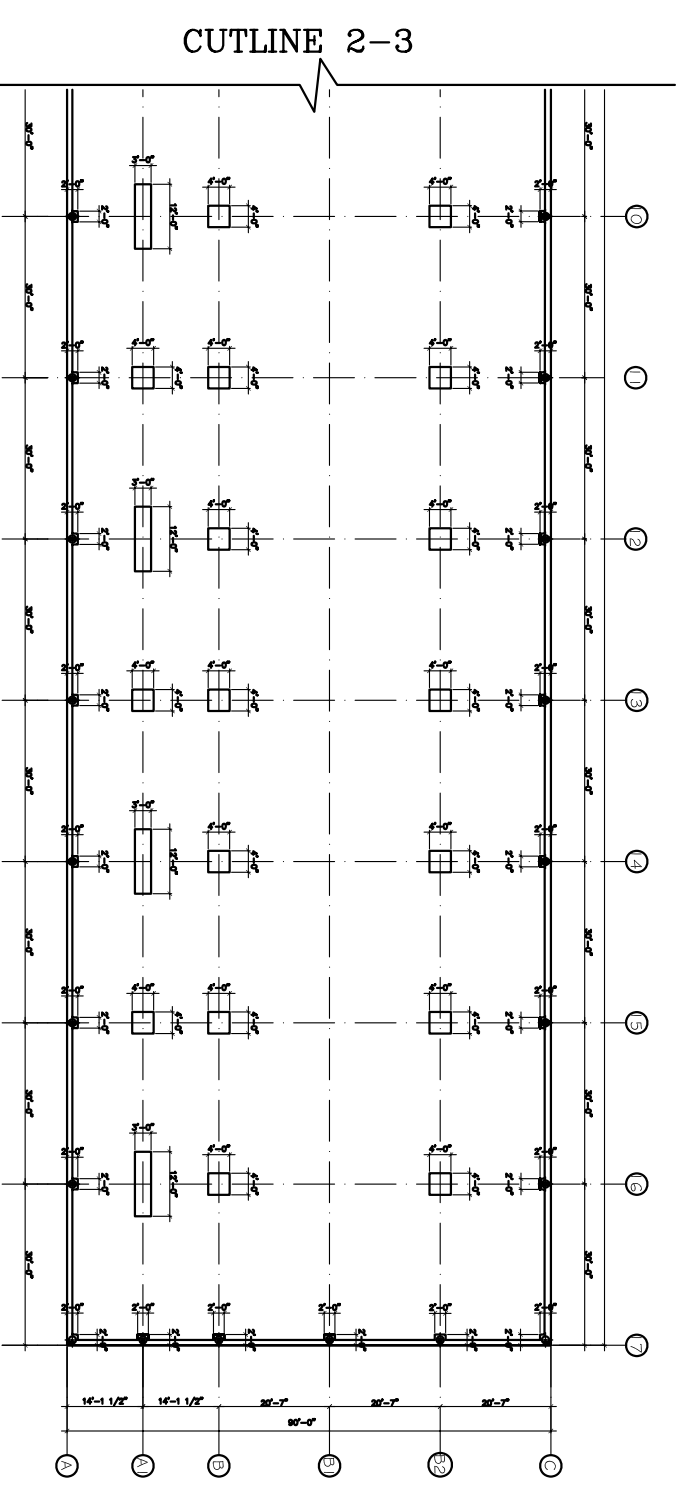
3
PILECAP DETAIL
SCALE 3/4" = 1'-0"



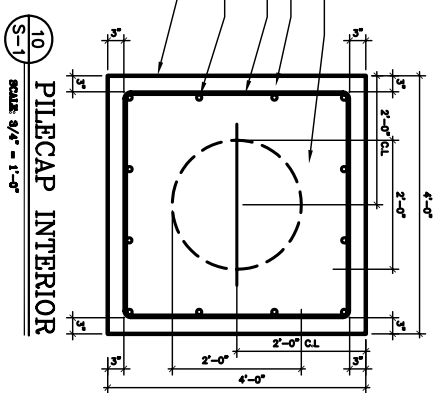
4
PILECAP DETAIL
SCALE 3/4" = 1'-0"



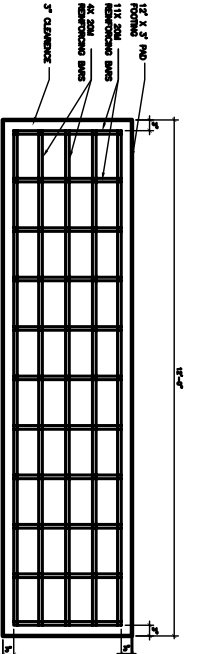
5
PILECAP ELEVATION
SCALE 3/4" = 1'-0"



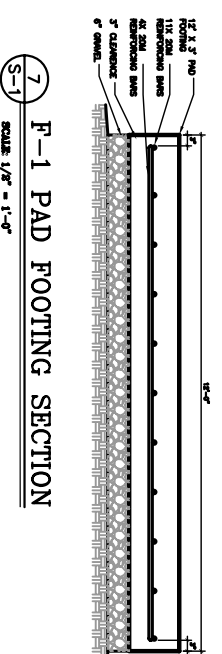
2
FOUNDATION PLAN
SCALE 1/16" = 1'-0"



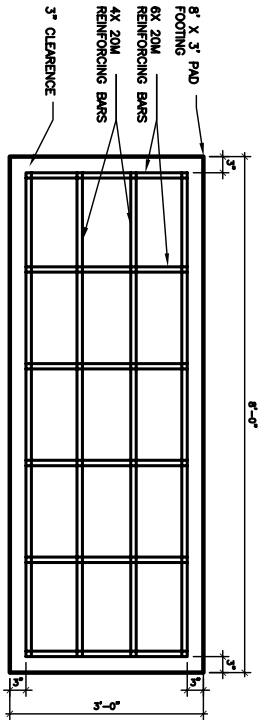
10
PILECAP INTERIOR
SCALE 3/4" = 1'-0"



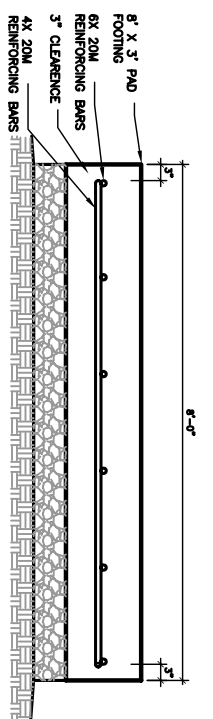
6
F-1 PAD FOOTING DETAIL INTERIOR
SCALE 1/2" = 1'-0"



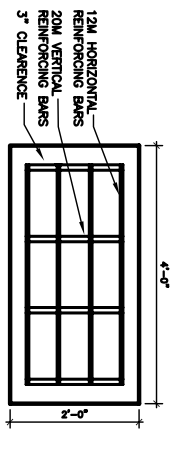
7
F-1 PAD FOOTING SECTION
SCALE 1/2" = 1'-0"



8
F-2 PAD FOOTING DETAIL INTERIOR
SCALE 3/4" = 1'-0"



9
F-2 PAD FOOTING SECTION
SCALE 3/4" = 1'-0"



11
PILECAP INTERIOR SECTION
SCALE 3/4" = 1'-0"