

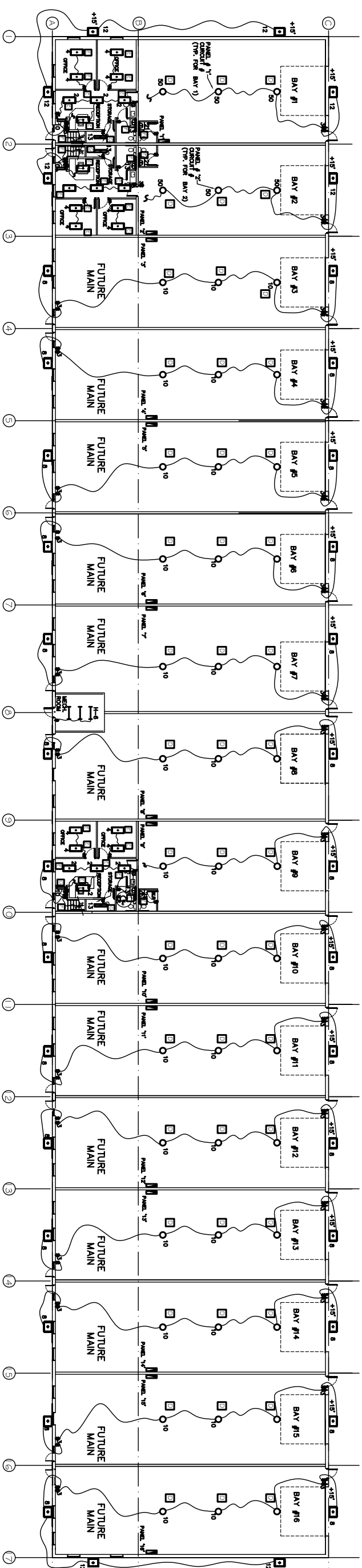
GENERAL NOTES

THE DRAWING AND THE DESIGN OF LIGHTING ARE THE PROPERTY OF D.F.K. ENGINEERING CANADA LIMITED, AND SHALL NOT BE REPRODUCED, COPIED, EITHER WHOLLY OR IN PART, OR USED FOR ANY PURPOSES WHATSOEVER EXCEPT BY WRITTEN CONSENT OF THE OWNER.

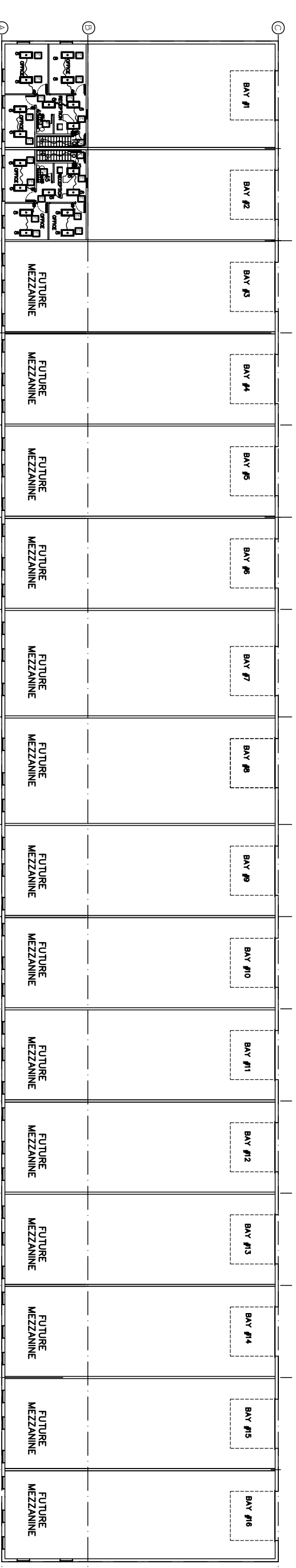


NOTE:

| NO. | DATE | DESCRIPTION |
|-----|------|-------------|
|     |      |             |
|     |      |             |
|     |      |             |



1 MAIN FLOOR-LIGHTNING LAYOUT  
E-3 SCALE: 1/16"=1'-0"



2 MEZZANINE LEVEL-LIGHTNING LAYOUT  
E-3 SCALE: 1/16"=1'-0"

| LIGHT FIXTURE SCHEDULE |   |
|------------------------|---|
| TYPE                   | DESCRIPTION                                 |
| D                      | KEENE 707P400MALJ (REFLECTOR 4) (1X400W MH) |
| E                      | C.F.I H952GLR228UNVPG (2X28W T5 4100K)      |
| F                      | C.F.I GSW14812050 (1XF32T8 4100K)           |
| G                      | C.F.I TX24812050 (2X F32T8 4100K)           |

|               |               |           |
|---------------|---------------|-----------|
| DRAWN         | CHECKED       | APPROVED  |
| R. KUMAR      | D. BIRTON     | G. PARRIS |
| SCALE:        | PROJECT NO.   |           |
| 1/16" = 1'-0" | 29-2411       |           |
| DATE:         | DATE PRINTED: |           |
| JULY 1, 2009  | AUG 20, 2009  |           |
|               | REVISION:     |           |

E-3

OF 5

**D.F.K. ENGINEERING CANADA LTD.**  
CONSULTING ENGINEERS  
PH: 403.236.1095 FAX: 403.279.2698  
EM: dfkeng@edusnet.ca  
2120 St. S. 8800 VENTURE AVE S.E.  
CALGARY, ALBERTA, T2S 0A2

**PERMIT TO PRACTICE**  
**D.F.K. ENGINEERING CANADA LTD.**  
Signature: \_\_\_\_\_  
Date: \_\_\_\_\_  
The Association of Professional Engineers, Geologists and Geophysicists of Alberta

PROJECT TITLE:  
OFFICE WAREHOUSE  
CONDOMINIUM  
24040 FRONTIER PLACE S.E.  
ROCKY VIEW ALBERTA.

SHEET TITLE:  
MAIN FLOOR &  
MEZZANINE LEVEL  
LIGHTNING LAYOUT