


GENERAL NOTES

THE DRAWING AND THE DESIGN IT CONTAINS ARE THE PROPERTY OF D.F.K. ENGINEERING CANADA LIMITED. ANY REPRODUCTION OR USE FOR ANY PURPOSES WITHOUT WRITTEN CONSENT OF THE OWNER.

NO.	DATE	DESCRIPTION

SEALS:



PERMIT TO PRACTICE
D.F.K. ENGINEERING CANADA LTD.
 D.F.K. ENGINEERING CANADA LTD.
 CONSULTING ENGINEERS
 Signature: _____
 Date: _____
 The Association of Professional Engineers, Geologists and Geophysicists of Alberta



D.F.K. ENGINEERING
CANADA LTD.
 CONSULTING ENGINEERS
 EM: dfkeng@telus.net
 2120, B - 8800 VENTURE AVE S.E.
 CALGARY, ALBERTA, T3S-0A2

PROJECT TITLE:
OFFICE WAREHOUSE CONDOMINIUM

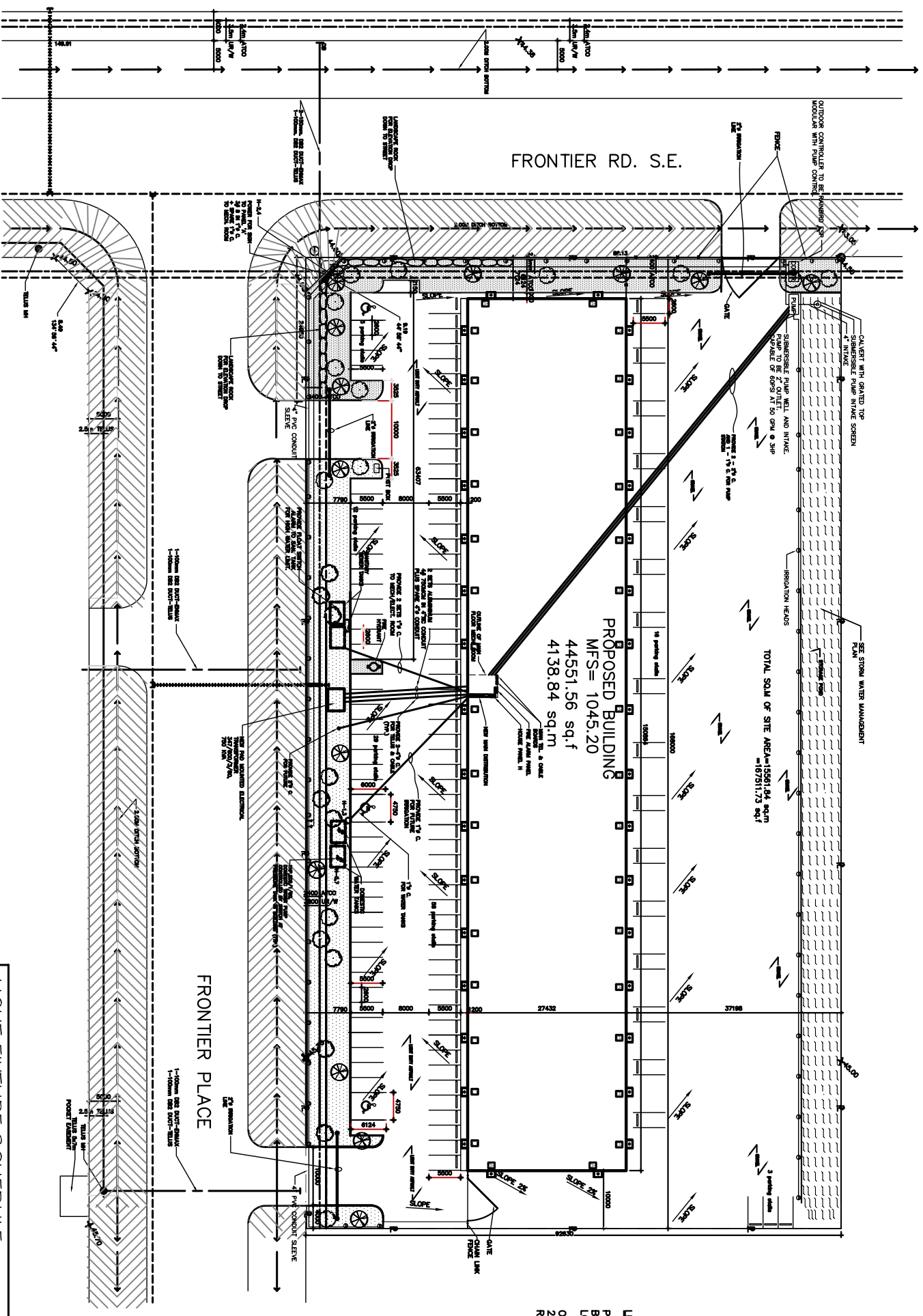
240040 FRONTIER PLACE SE
 ROCKY VIEW, ALBERTA.

SHEET TITLE:
SITE PLAN ELECTRICAL LAYOUT

DRAWN:	R. KIMAR	CHECKED:	D. BERTON	APPROVED:	G. FRIBUS
SCALE:	1:400	PROJECT NO.:	29-2411	DATE:	JULY 1, 2009
DATE PRINTED:	AUG 20, 2009	REVISIONS:			

E-1

OF 5



1 SITE PLAN-ELECTRICAL LAYOUT
 SCALE 1:400

LIGHT FIXTURE SCHEDULE

TYPE	DESCRIPTION
A	KEENE FPL250MALT @ 0 DEGREES (1 x 250W MH)
B	KEENE FPL175MALT @ 22.5 DEGREES (1 x 175W MH)
C	KEENE TLW050NLXL (1 x 50W HPS)