

GENERAL NOTES

THE DRAWING AND THE DESIGN IT CONTAINS ARE THE PROPERTY OF D.F.K. ENGINEERING CANADA LIMITED AND SHALL NOT BE REPRODUCED OR TRANSMITTED IN ANY FORM OR BY ANY MEANS, ELECTRONIC OR MECHANICAL, INCLUDING PHOTOCOPYING, RECORDING, OR BY ANY INFORMATION STORAGE AND RETRIEVAL SYSTEM, WITHOUT THE WRITTEN CONSENT OF THE OWNER.

NOTE:

NO.	DATE	DESCRIPTION

SEALS:



PERMIT TO PRACTISE
D.F.K. ENGINEERING CANADA LTD.
 Signature: _____
 Date: _____
 The Association of Professional Engineers, Geologists and Geophysicists of Alberta



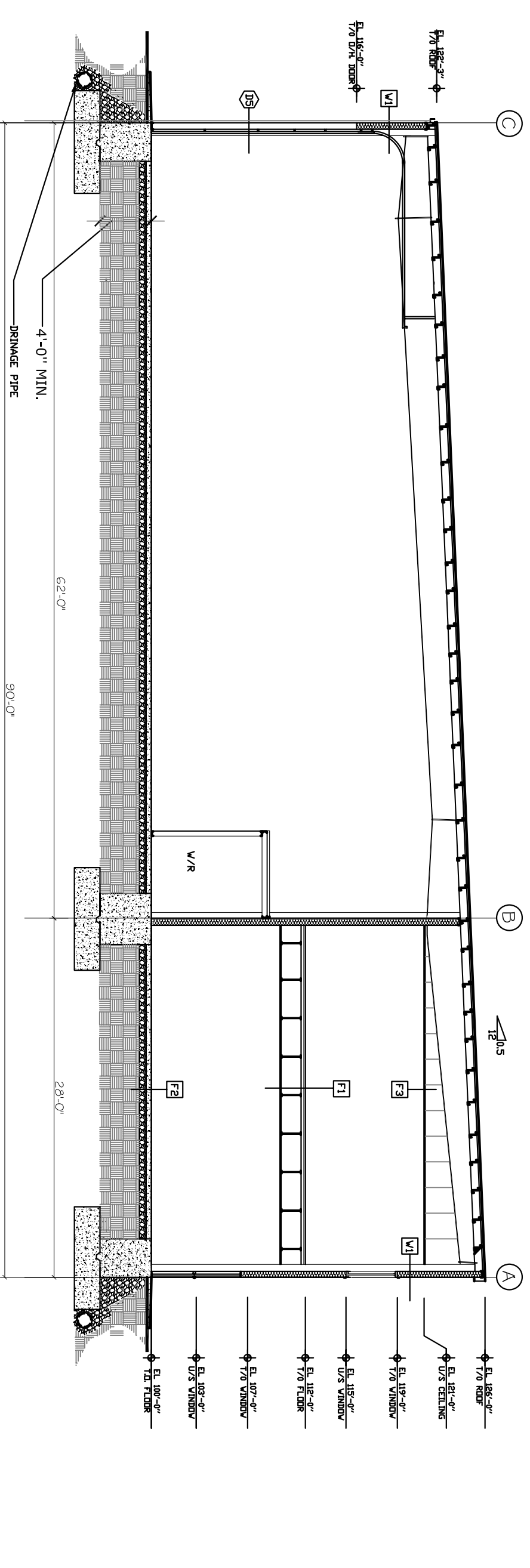
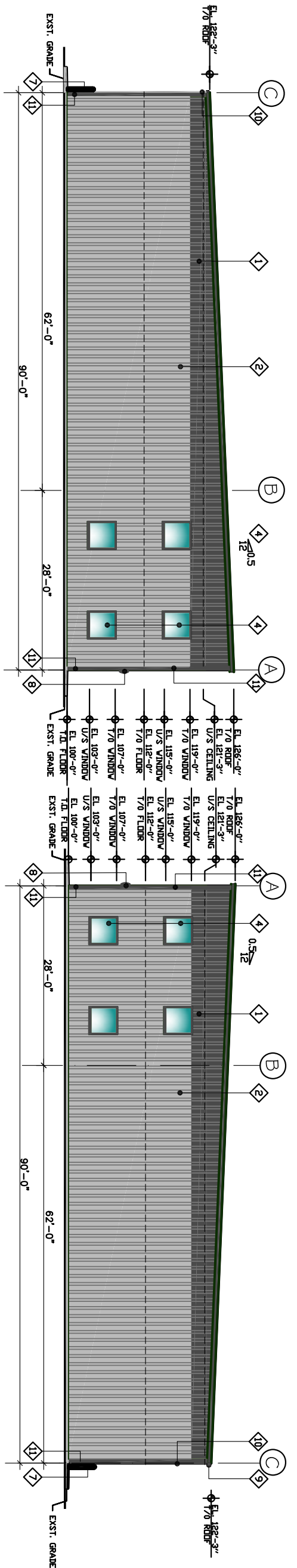
D.F.K. ENGINEERING CANADA LTD.
 CONSULTING ENGINEERS
 P.N.S. dfrking@shaw.ca
 P.H. 403.236.1095 F.A.X. 403.279.2698
 2120 S. 8800 VENTURE AVE. S.E.
 CALGARY, ALBERTA, T2S 0A2

PROJECT TITLE:
OFFICE WAREHOUSE CONDOMINIUM
 24040 FRONTIER PLACE S/E
 ROCKY VIEW ALBERTA.

SHEET TITLE:
NORTH, SOUTH ELEVATIONS & SECTION

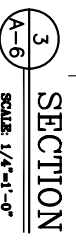
DRAWN	CHECKED	APPROVED
HORR.E.	D. BERTON	G. FERNS
SCALE:	AS NOTED	PROJECT NO. 20-2411
DATE:	FEB. 17, 2009	DATE PRINTED: SEP 15, 2009
		REVISIONS:

A-6
 OF 7



3 SECTION
 SCALE: 1/4"=1'-0"

A-6



MATERIALS LEGEND

- 1 STEEL CLADDING PTD-COLOR CHARCOLE
- 2 STEEL CLADDING PTD-COLOR 'REGENT GREY'
- 3 GALVANIZED ROOFING-COLOR LIGHT GRAY
- 4 PVC WINDOW L/OV E' COLOR WHITE WITH METAL TRIM PTD. 'CHARCOL.'
- 5 METAL DOOR 7'-6" WITH DOOR WINDOW PTD. 'REGENT GRAY' METAL TRIM AND FLASHING PTD. 'CHARCOL.'
- 6 METAL DOOR PTD. 'REGENT GRAY' WITH METAL TRIM AND FLASHING PTD. 'CHARCOL.'
- 7 6" x 6" BOLLARD-4'-0" HIGH-PTD. YELLOW
- 8 LIGHT FIXTURE
- 9 GALVANIZED METAL GUTTER COLOR 'CHARCOL.'
- 10 DRAINS-COLOR 'REGENT GREY' TO MATCH BUILDING COLOR.
- 11 CORNER METAL FLASHING PTD. 'CHARCOL.'