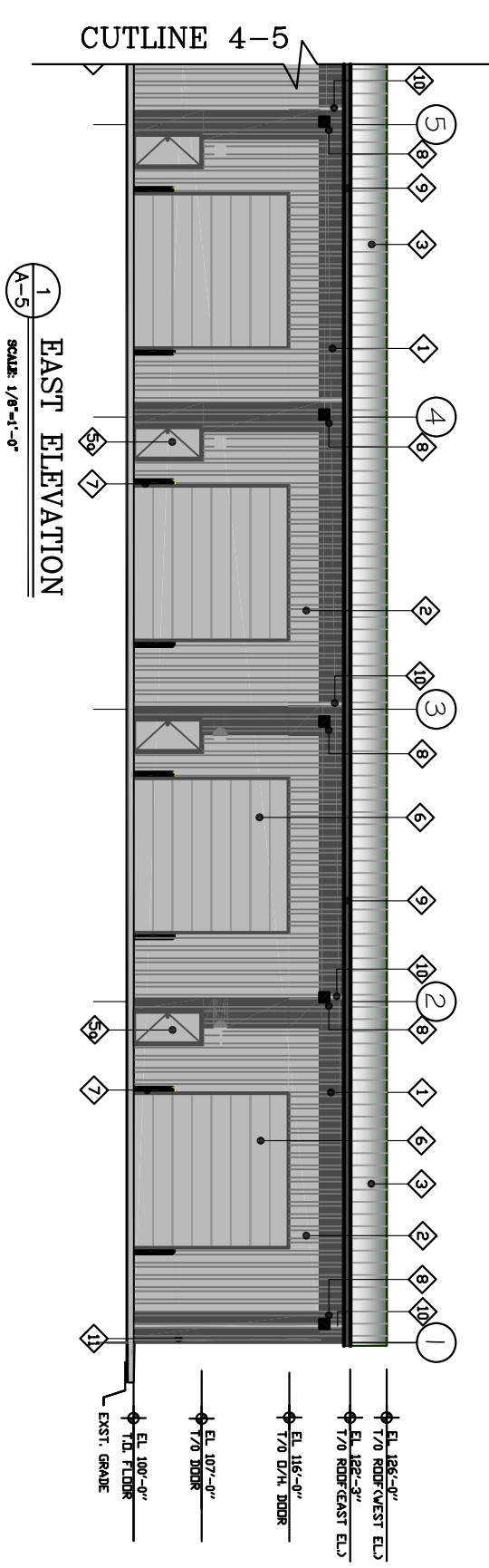
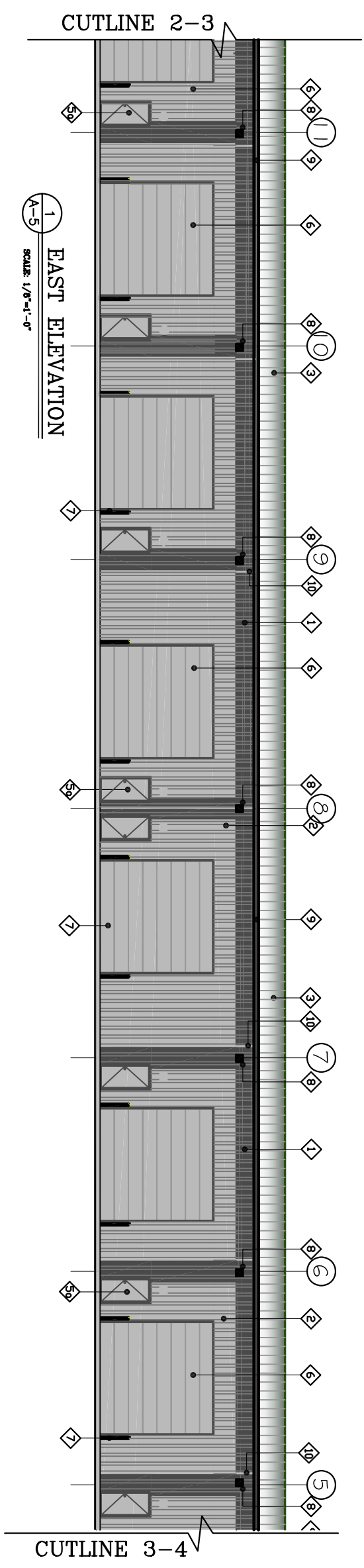
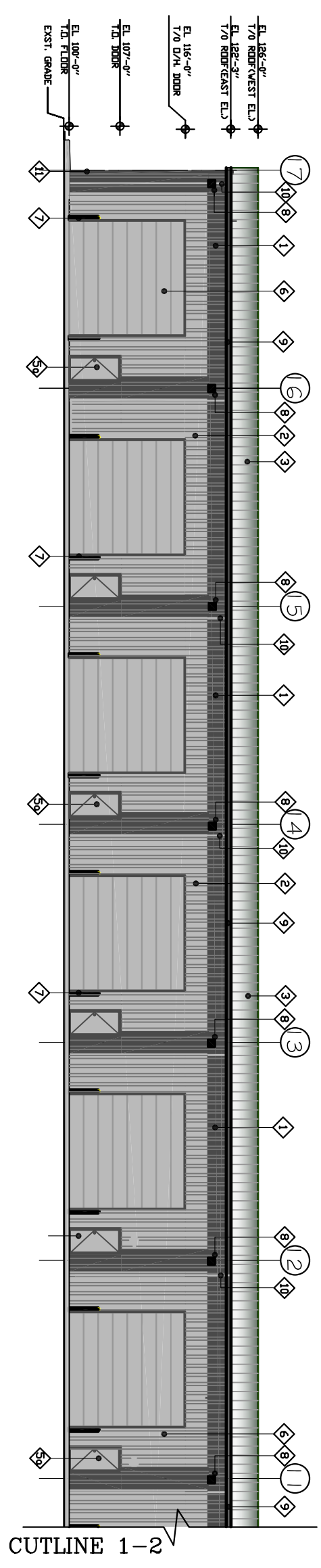


GENERAL NOTES

1. THE DRAWING AND THE DESIGN IT CONTAINS ARE THE PROPERTY OF D.F.K. ENGINEERING CANADA LIMITED. ANY SHALL NOT BE REPRODUCED OR TRANSMITTED IN ANY FORM OR BY ANY MEANS, ELECTRONIC OR MECHANICAL, INCLUDING PHOTOCOPYING, RECORDING, OR BY ANY INFORMATION STORAGE AND RETRIEVAL SYSTEM, WITHOUT THE WRITTEN CONSENT OF THE OWNER.

NOTE:



- MATERIALS LEGEND**
- 1 STEEL CLADDING PTD.-COLOR: 'CHARCOAL.'
 - 2 STEEL CLADDING PTD.-COLOR: 'REGENT GREY'
 - 3 GALVANIZED ROOFING-COLOR: LIGHT GRAY.
 - 4 PVC WINDOW, 4"LV 6" COLOR: WHITE
 - 5 METAL TRIM PTD. 'CHARCOAL.'
 - 6 METAL DOOR 7'-0" WITH DOOR WINDOW PTD. 'REGENT GRAY'
 - 7 METAL DOOR PTD. 'REGENT GRAY'
 - 8 METAL 16"x16" D/H DOOR PTD. 'REGENT GREY'
 - 9 METAL 16"x16" D/H DOOR PTD. 'REGENT GREY'
 - 10 6" H BOLLARD-4" H HIGH-PTD. YELLOW
 - 11 LIGHT FIXTURE
 - 12 GALVANIZED METAL GUTTER COLOR: 'CHARCOAL.'
 - 13 BRANS-COLOR: 'REGENT GREY' TO MATCH BUILDING COLOR.
 - 14 CORNER METAL FLASHING PTD. 'CHARCOAL.'

NO.	DATE	DESCRIPTION

SEALS:

PERMIT TO PRACTISE
D.F.K. ENGINEERING CANADA LTD.
Signature: _____
Date: _____
The Association of Professional Engineers, Geologists and Geophysicists of Alberta

D.F.K. ENGINEERING CANADA LTD.
CONSULTING ENGINEERS
P.N. dirkeng@ehs.com
PH: 403.236.1095 FAX: 403.279.2698
2120 S. 8800 VENTURE AVE. SE.
CALGARY, ALBERTA, T2S 0A2

PROJECT TITLE:
OFFICE WAREHOUSE CONDOMINIUM

240040 FRONTIER PLACE SE
ROCKY VIEW ALBERTA.

SHEET TITLE:
EAST ELEVATION

DRAWN: D. BERTON	CHECKED: D. BERTON	APPROVED: G. PEARIS
SCALE: AS NOTED	PROJECT NO: 29-2411	DATE: JULY 1, 2009
DATE: JULY 1, 2009	DATE PRINTED: SEP 17, 2009	REVISION:

A-5
OF 7